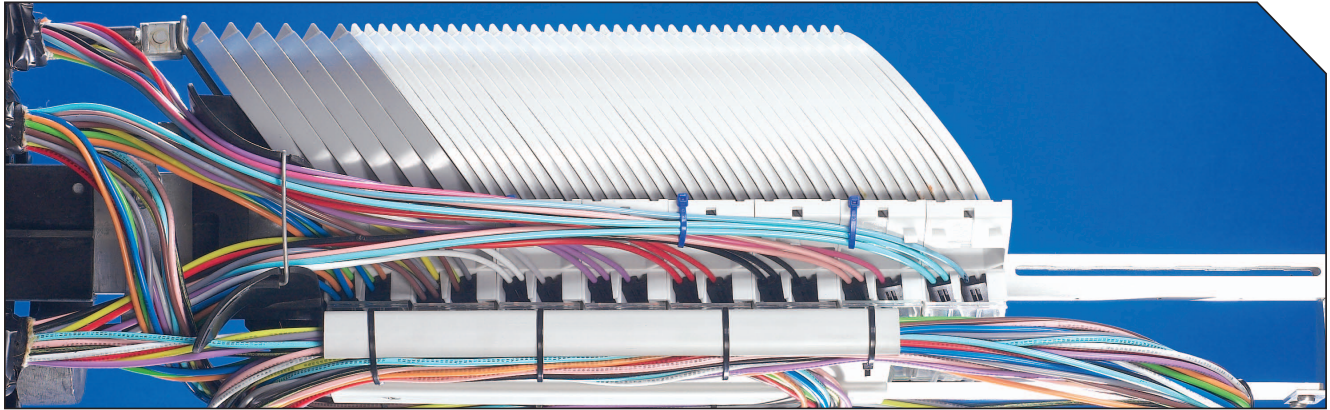


SAFeTNET™ Closure



General Recommendations



SAFeTNET is a new fibre management concept, which allows the operator to have the flexibility to manage their fibre network in many different ways. Whether it is by the fibre network topology or by the subscriber the SAFeTNET fibre management system can adapt expressing fibres either individually (Single Circuit), by the element or even fibres from different tubes!

FibreGuard SAFeTNET Closure base kit consists of:

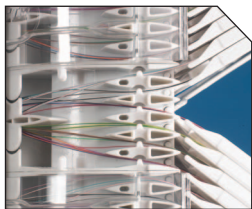
- Dome Cover
- Base and Buffer Tube Storage
- Express port grommet kit

Key Features:

- Controlled fibre bend management
- Management of uncut fibres in single element, single circuit or distribution module
- No retubing of fibres
- Modules are stackable and interchangeable
- High capacity
- Distribution of fibres from module to module
- Limited components
- Ability to access all fibres of the network
- Suit heatshrink and ANT splice protectors

Available in 2 sizes, 800mm and 400mm

Both Enclosure utilises the same components and can be inter-changed



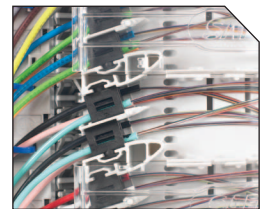
Fibre Distribution



Fibre Trays Management



Splice Trays



Buffer Tube Storage

Part Number	Splice Unit Capacity	CIRCUIT Unit	Cable Range (mm)	Number of Entries
FGS800-12	12	432 fibres	432 fibres	800
FGS800-06	6	216 fibres	216 fibres	400